

Observations of Plot 6 Larix Damage (Spring 2025)

Mark Guilliams and Kyle Pearson

ORNL is managed by UT-Battelle, LLC for the US Department of Energy

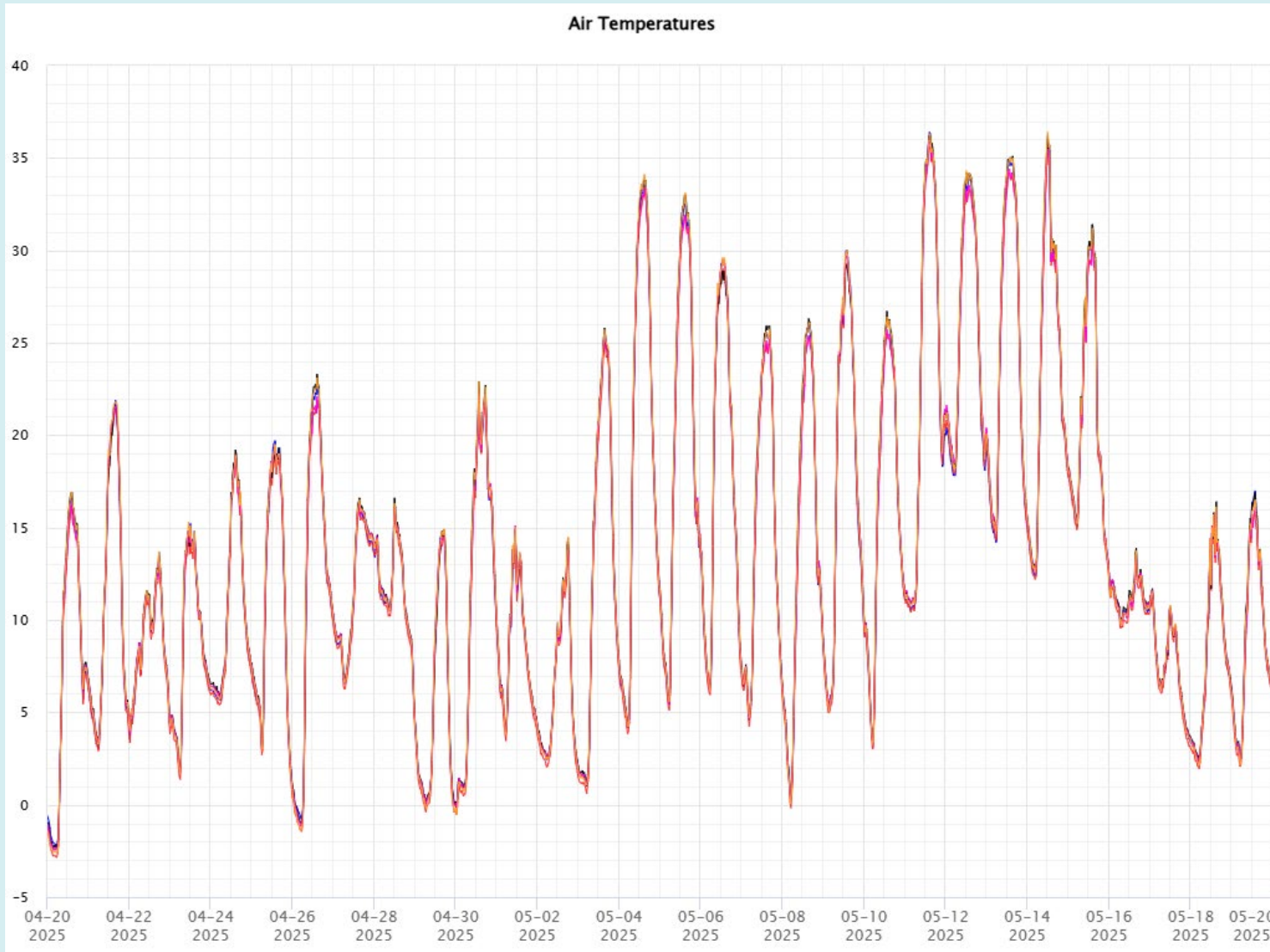


U.S. DEPARTMENT OF
ENERGY

Plot 6(+0C) Larix Damage



High Air Temps with Ice Layer Still Present



Plot 6:

- Bud break recorded 4/24/25
 - First observed whitening: 5/08/25
 - Air temp peaked at 36.2°C 5/11/25
-
- Probed for ice 5/16/25:
 - P6 solid ice layer still at 10-30cm
 - P9 solid ice 10-30cm (except the hummock where the one small larch is)
 - P7 mostly holes, ice 30-60cm
 - P11 full of holes, ice 30-60cm
 - P20 little ice, mostly holes