

SPRUCE Operations through 2026 and decommissioning

A summary of discussions from the
2025 All-Hands Meeting

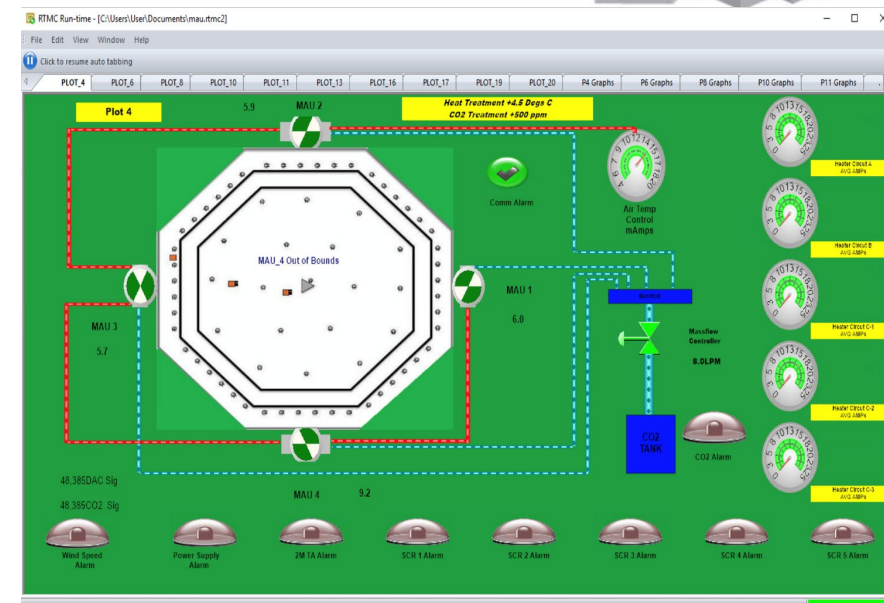
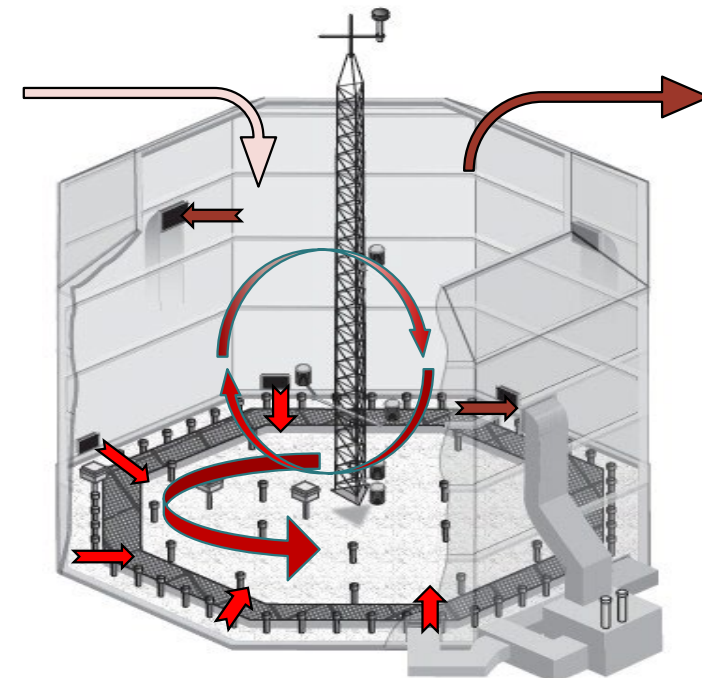
ORNL is managed by UT-Battelle, LLC for the US Department of Energy



U.S. DEPARTMENT OF
ENERGY

Ceasing treatments

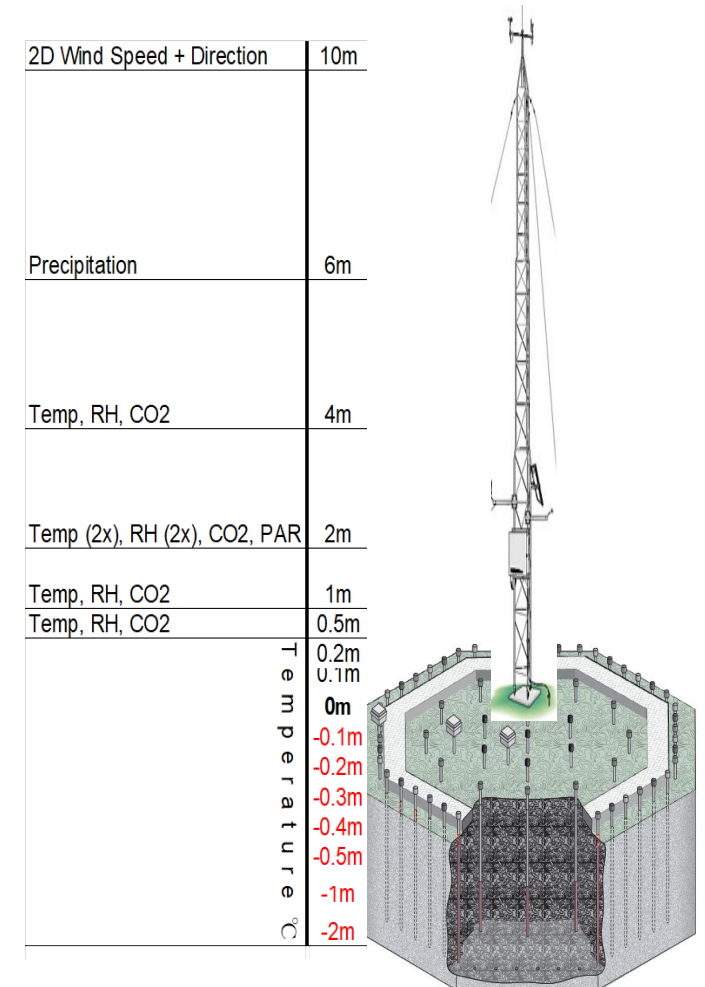
- Through the end of 2025:
 - All treatments, measurements to continue as normal
 - Minus things which have already halted like resins, AMRs
 - Site maintained through 30 Dec as though we mean to continue into perpetuity
- 31 Dec 2025:
 - Turning off above-ground, below-ground heating
 - Finalizing CO2 shutoff, system will likely have been empty since Nov
- What we're not turning off:
 - Electricity
 - Internet/network
 - Chamber MAUs



Continuing measurements and operations in 2026

- Plot central towers will be treated as singular meteorological stations, all measurements as necessary components
 - Soil and air temp, RH, CO₂, PAR, precipitation, wind speed and direction
- Normal HMP-155 calibrations will halt after winter 2026. 4m units will be “abandoned-in-place,” other units will be swapped with calibrated spares while supplies last.
 - Spares should cover ~half the site
 - Logs will be kept as individual units go beyond the recommended 1-year service period, likely beginning late ‘26 or early ‘27
- Total number of “met stations” will be reduced after above-ground enclosures are breached
 - Prioritize plots 5, 7, 21 as they have the longest continuous data streams

Continuous Monitoring



Continuing measurements and operations in 2026

- Soil moisture and WT will be maintained at all plots at least through 2026
 - Will use to monitor change once below-ground corral is breached
- Outflow sampling to be ceased by end of 2025
 - Sump system maintained until below-ground corral is breached
- Tree physiology measurements to conclude end of 2025 (unless someone wants to take on the dendrometers)
 - Winter tree growth campaign to wrap with winter 2026 measurement
- Ground phenology observations to continue at least through 2026 allometry measurements, likely the entire growing season

What we don't know yet

- When will the above-ground enclosures be breached
- When will the below-ground enclosures be breached
- What will be the fate of SPRUCE scientific instrumentation
- More specific decommissioning timelines (likely in '27 or '28)
 - When does the internet/network get shut off
 - When does the electricity get shut off
 - When does the field office need to be vacated